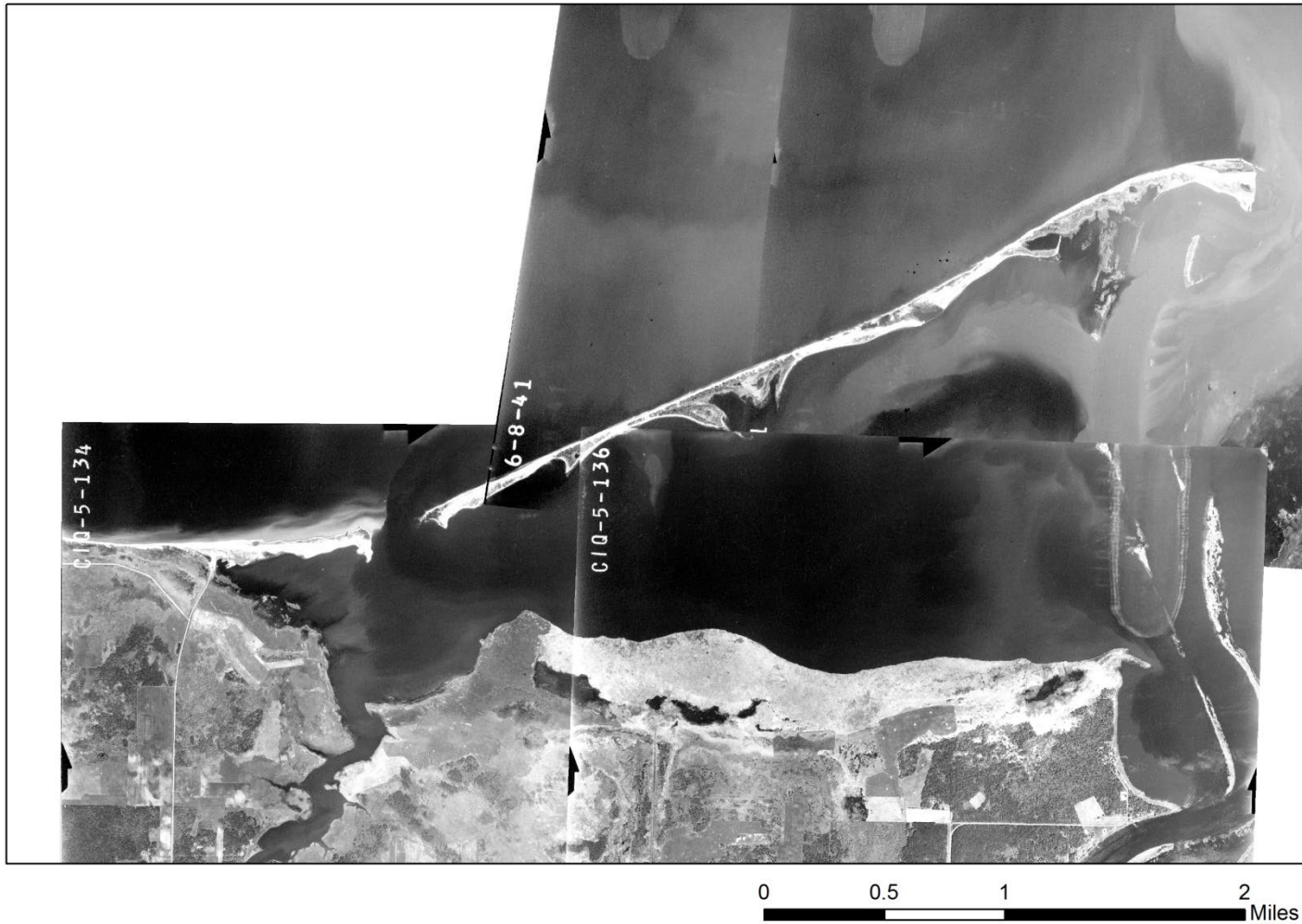


Changes to Pine & Curry Island 1941-2013

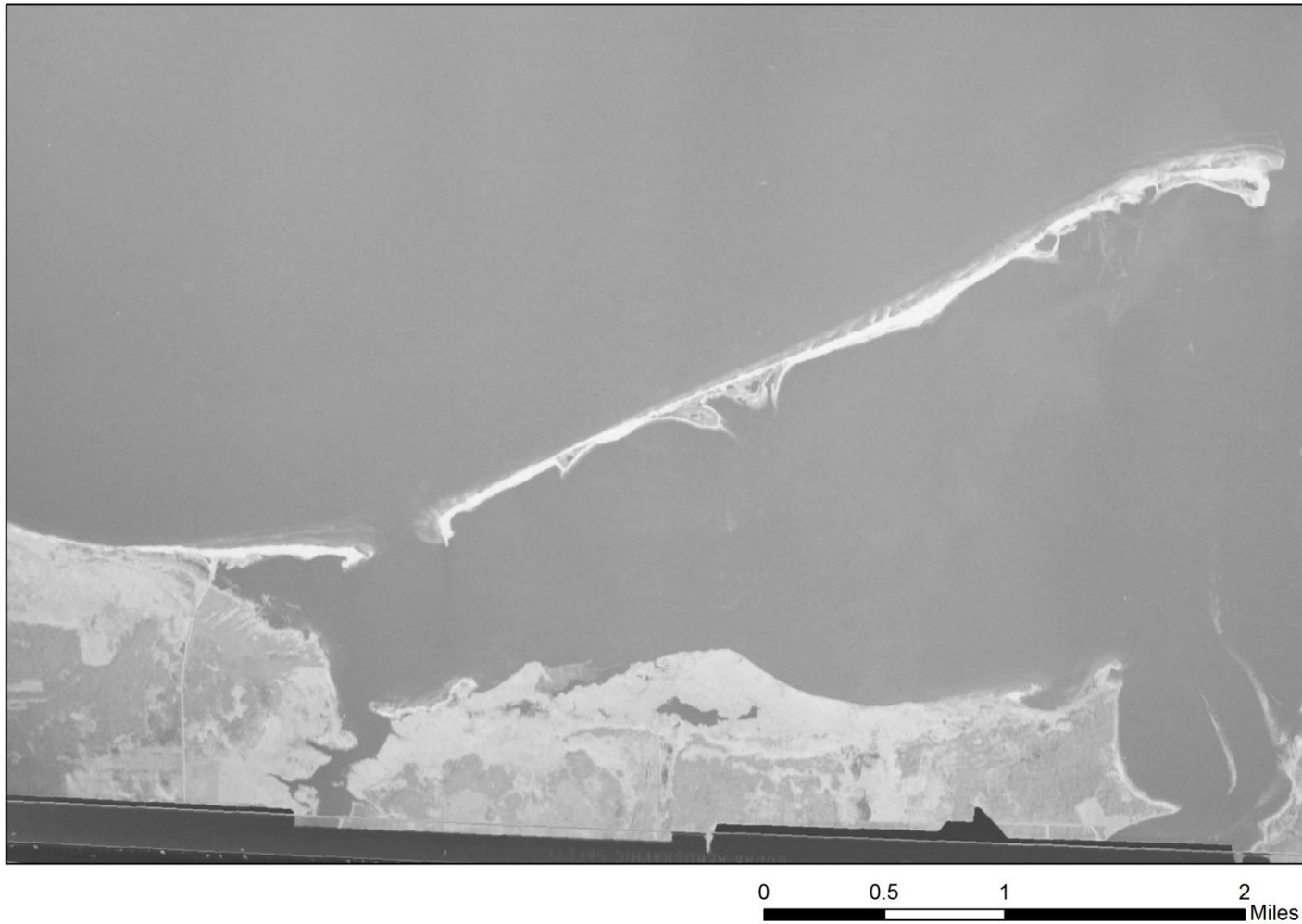
Tyler Janke
Natural Areas Specialist
MN DNR

1941



1941-1985 Pine & Curry Island grows slowly to the southwest, while Morris point grows a peninsula to the southeast

1953



1941-1985 Pine & Curry Island grows slowly to the southwest, while Morris point grows a peninsula to the southeast

1965



1941-1985 Pine & Curry Island grows slowly to the southwest, while Morris point grows a peninsula to the southeast

1985



0 0.5 1 2 Miles

1941-1985 Pine & Curry Island grows slowly to the southwest, while Morris point grows a peninsula to the southeast

1990



0 0.5 1 2 Miles

P & C island is breached in two places in 1985-86. Breach locations remain stable until 1989 when a ½ mile wide gap develops, creating a small island separate from Pine & Curry island and Morris point.

1995



0 0.5 1 2 Miles

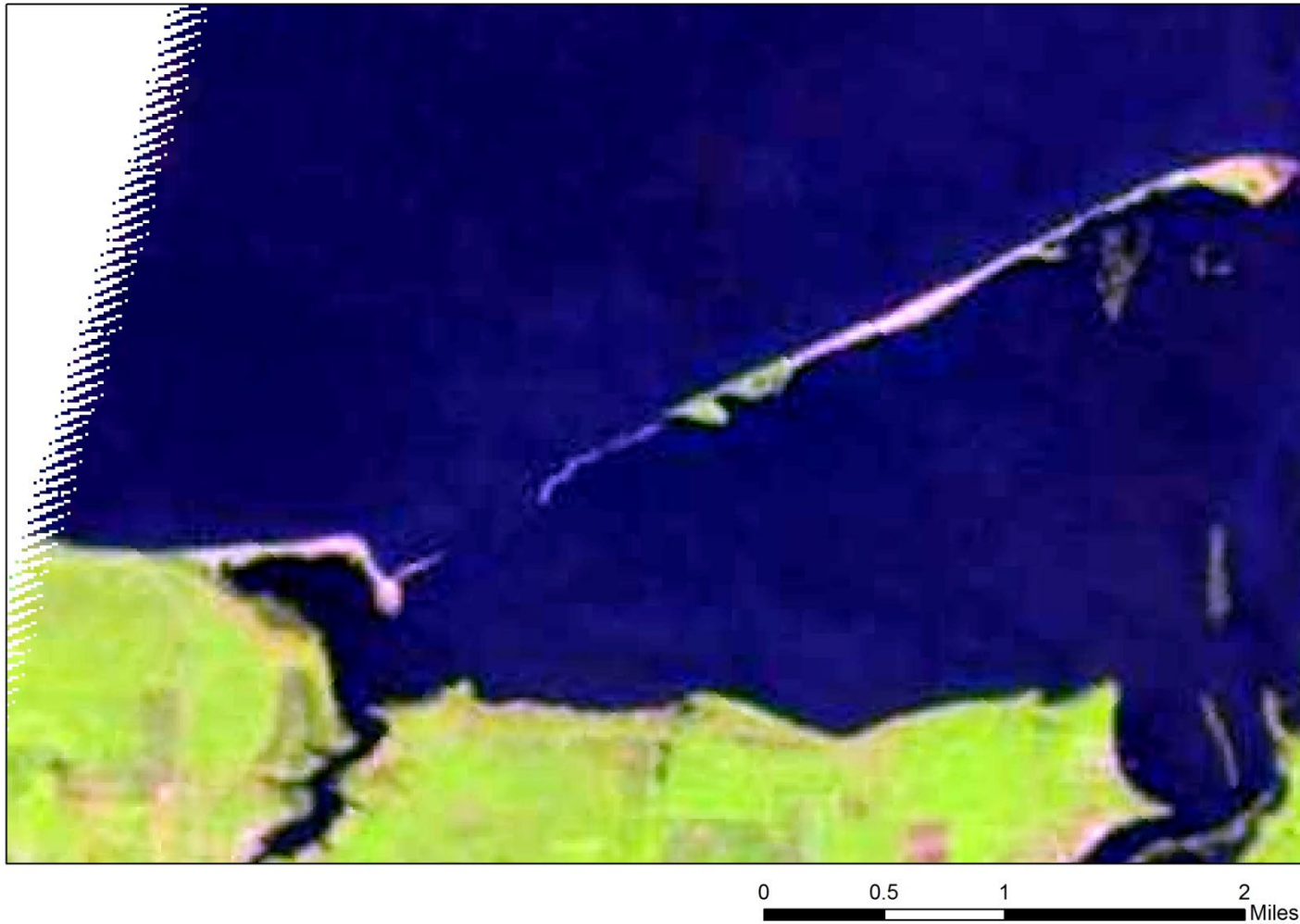
P & C island is breached in two places in 1985-86. Breach locations remain stable until 1989 when a ½ mile wide gap develops, creating a small island separate from Pine & Curry island and Morris point.

1998



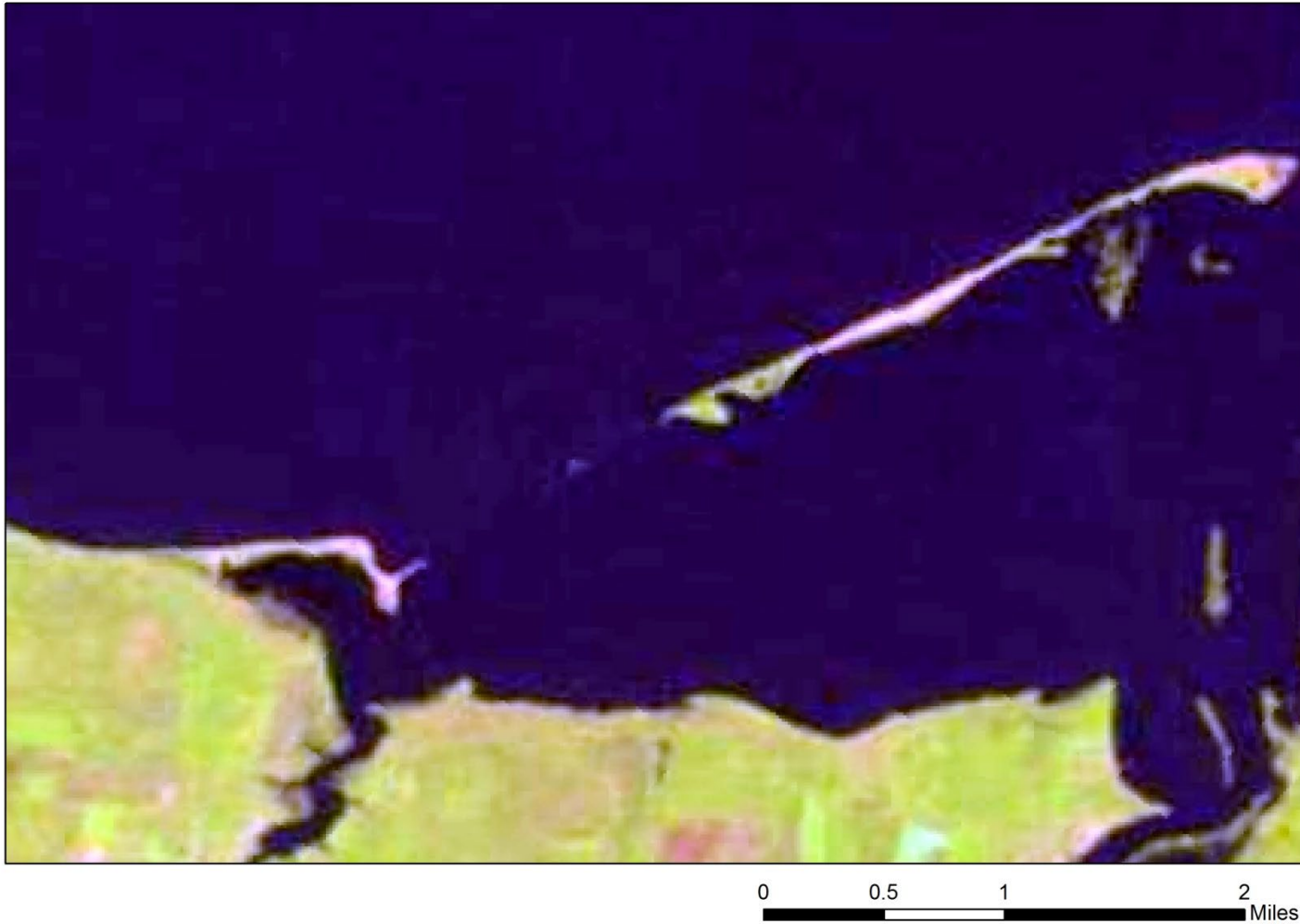
In 1998, the “new” island off Morris point and the southwestern most ½ mile of Pine & Curry Island continue to erode and almost completely disappear by 2000.

1999



In 1998, the “new” island off Morris point and the southwestern most ½ mile of Pine & Curry Island continue to erode and almost completely disappear by 2000.

2000



In 1998, the “new” island off Morris point and the southwestern most ½ mile of Pine & Curry Island continue to erode and almost completely disappear by 2000.

2010



From 2000 to 2010, a small spur off of Morris point erodes, while Pine & Curry Island remains relatively stable

2013



0 0.5 1 2 Miles